

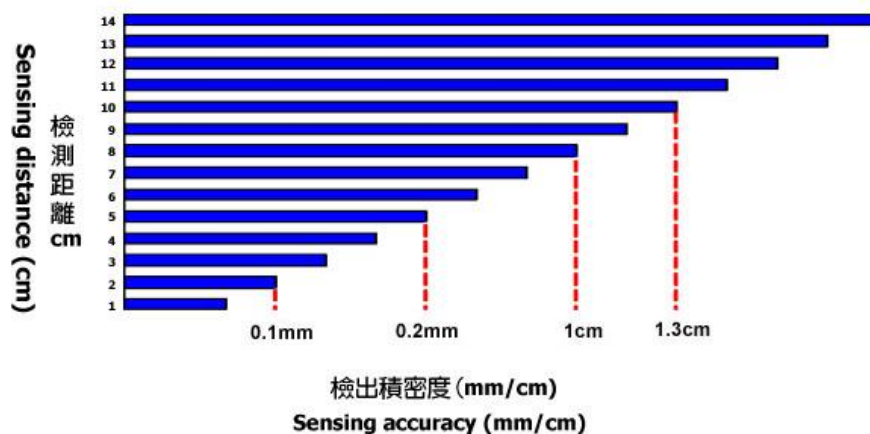
Background Elimination Digital Photo Sensor



Features

Background Elimination based on the same color and background is lighter, then the object accuracy is less than 0.1mm and not over than 1cm.

- * Accuracy is changed by the sensing distance The distance is shorter the accuracy is much better This type is most suitable on PCB detecting procedure.
- * The table is for expressing when Sensing Object is the same color as it's background color (our standard testing object is white) the sensing accuracy is smaller when the distance is shorter; and the sensing accuracy is bigger when the distance is longer.



Standard Specification

Type	Out type	1	NPN / NO.NC	UDN-20B-N
		2	PNP / NO.NC	UDN-20B-P
Detective Method			Reflex type	
Sensitivity			With Setting Button	
Sensing distance			20cm	
Emission			Infrared	
Current Operating voltage			DC 12V-24V permissible ripple (P.P):10% max.	
Current consumption			≥ 60mA	
Standard Sensing object			8x8cm White paper	
Load current max.			200mA	
Response frequency			100Hz	
Residual output voltage			1.2V max. 1L= 200mA, cable 2m	
Output type			N series: NPN NO/NC / P series: PNP NO/NC	
Protection circuit			Polarity, short circuit, over current, surge voltage protection	
Indicator			Green LED: Power / Red LED: Output	
Wiring method			ø 4mm, 2m length. 0.23mm 4conductor section	
Ambient temperature and humidity			-25° C to 55° C , 35~90% RH	
Degree operating temperature			IEC, IP67	
Housing material			Housing: ABS material	
Weight			100g	
Accessories			nut and 3ø screw----each two units L type fixed one pcs	

Operation Instructions

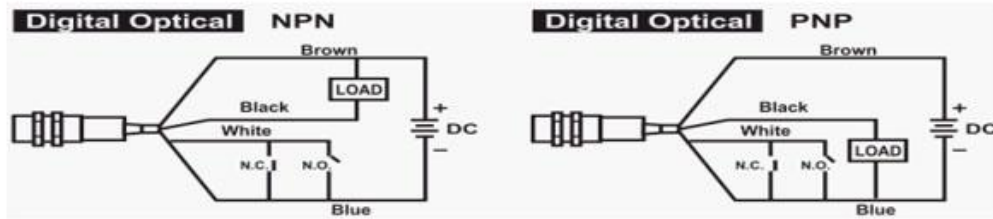
A. Setting sensitivity:

1. Aim beam spot at object and press "SET" button for 3 seconds till green light starts counting down to flashing to complete setting.
2. With multicolored objects, aim beam spot at the background of the object and repeat the first step as above (the beam can detect multicolored objects).

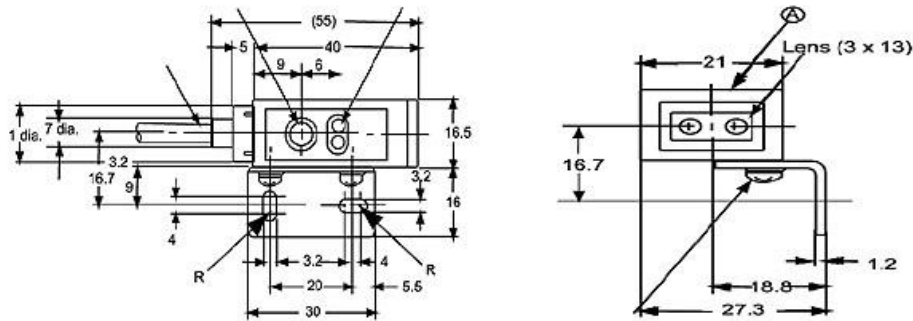
- B. Disconnect white electric wire from "Normal Open." Short both blue and white wires and restart power to complete N/C switching.

Diagram

CONNECTION DIAGRAM



Dimensions



Contact

Taipei World Trade Center

Add: 3C25, Taipei World Trade Center, No. 5, Sec. 5, Hsin Yi Rd. Taipei Taiwan, R.O.C.

Tel: 886-2-27206601 (Rep.)

Fax: 886-2-23455120

E-mail: gitta@ms9.hinet.net

<http://www.maxthermo.com>

Factory

Add: 11F., No.168, Jiankang Rd., Zhonghe Dist., New Taipei City 235, Taiwan (R.O.C.)

Tel: 886-2-22287950 (Rep.)

Fax: 886-2-22286140

Thailand Office - THAI MAXIMUM ELECTRONIC CO., LTD

Add: 86/132-133 m.7 Samaedum Bangkoontien Bangkok 10150 Thailand.

Tel: +662-415-8318 , +662-417-2548-49

Fax: +662-415-8798

<http://www.thaimaximum.com>