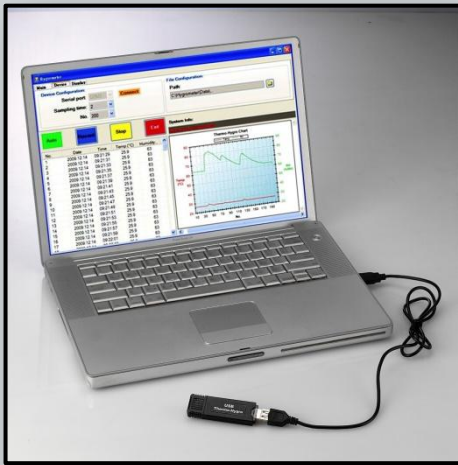


## RTH-101 Mini USB Thermo-Hygrometer

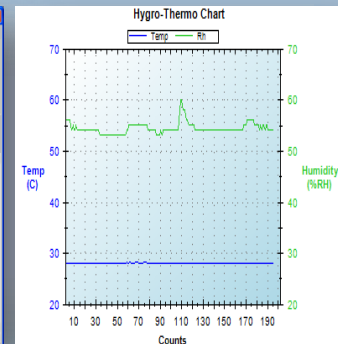
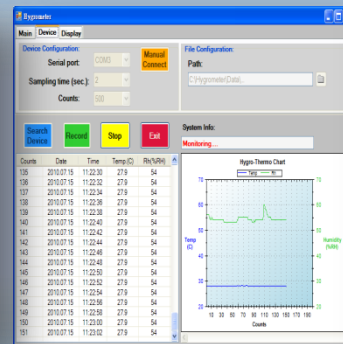
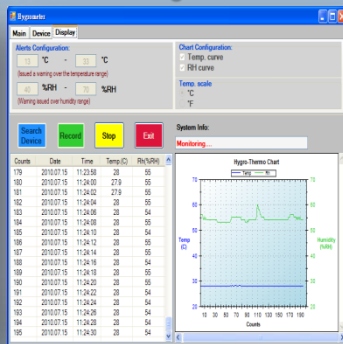
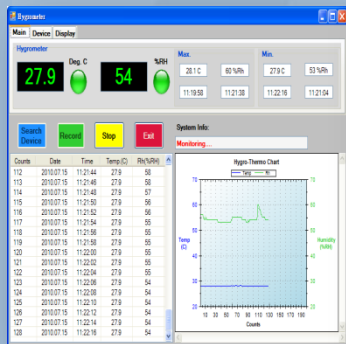


### FEATURES:

Humidity : 10%RH ~ 95%RH  
 Temperature : -20°C ~ +65.0°C (-4°F ~ +149°F)

### SPECIFICATIONS:

Temperature : Measuring Range -20°C ~ +65.0°C (-4°F ~ +149°F)  
 Accuracy :  $\pm 1^{\circ}\text{C}$  ( $0^{\circ}\text{C}$  ~ +40°C)  
 Resolution : 0.1°C (0.1°F)  
 Sampling Time : program setting (2, 5, 10, 20, 30, ...Sec)  
 Humidity : Measuring Range 10%RH ~ 95%RH  
 Accuracy : 30%RH ~ 80 %RH  
 ( $\pm 3\%RH + 1$  digital at +25°C) Others within 5%RH  
 Resolution : 1%RH  
 Sampling Time : program setting (2, 5, 10, 20, 30, ...Sec)  
 PC Interface : USB 2.0 compatible virtual com port (RS232 mode)  
 Operation Condition : Temperature 0 ~ +65°C, Humidity 10%RH ~ 95%RH  
 Storage Condition : Recommend 0 ~ +40°C, < 90%RH  
 Software Function : Display · Storage · Recorder · Setting · Chart....  
 USB cable & software included  
 Reg. No. M



## RTH-102 USB Thermo-Hygrometer



### FEATURES:

Humidity : 10%RH ~ 95%RH  
 Temperature : -20°C ~ +65.0°C (-4°F ~ +149°F)  
 Uncomfortable Indicator : COLD/HOT, DRY/WET

### SPECIFICATIONS:

Temperature : Measuring Range -20°C ~ +65.0°C (-4°F ~ +149°F)  
 Accuracy :  $\pm 1^{\circ}\text{C}$  ( $0^{\circ}\text{C}$  ~ +40°C)  
 Resolution : 0.1°C (0.1°F)  
 Sampling Time : program setting (2, 5, 10, 20, 30, ...Sec)  
 Humidity : Measuring Range 10%RH ~ 95%RH  
 Accuracy : 30%RH ~ 80 %RH  
 ( $\pm 3\%RH + 1$  digital at +25°C) Others within 5%RH  
 Resolution : 1%RH  
 Sampling Time : program setting (2, 5, 10, 20, 30, ...Sec)  
 LCD : 95mm X 27mm  
 Power : UM-4 1.5V (AAA) x 2 or USB power  
 Low Battery Indicator : < 2.8V  
 PC Interface : USB 2.0 compatible virtual com port (RS232 mode)  
 Operation Condition : Temperature 0 ~ +65°C, Humidity 10%RH ~ 95%RH  
 Storage Condition : Recommend 0 ~ +40°C, < 90%RH  
 Software Function : Display · Storage · Recorder · Setting · Chart....  
 USB cable & software included

## SP-59 Pipe Clamp Temperature Probe



### SPECIFICATION:

1. Temperature Range : -50°C ~ +120°C (-58°F ~ +248°F)  
-50°C ~ +600°C (-58°F ~ +1112°F)
2. Accuracy :  $\pm 2.5^{\circ}\text{C}$  (-50°C ~ +350°C)  
 $\pm 4.5^{\circ}\text{F}$  (-58°F ~ +662°F)  
the remainder range :  $\pm 0.0075 | t |$
3. Plug the PC-102 to type K thermometer
4. For pipe size from 3mm ~ 48mm
5. With 2 M coiled cable blue color, yellow color, green color are available ( by optional ).
6. Type J, Type T, Type E are available ( by optional ).
7. N.W. : 125 g

### APPLICATIONS:

Ideal for pipe surface temperature, heating, ventilating, air conditioning, engine or cylinder circular tube ...etc.  
Reg. No. M340448

## SP-60 Soldering Iron Tip Temperature Probe



### SPECIFICATION:

1. Measuring Range : -50°C ~ +600°C (-58°F ~ +1112°F)
2. Accuracy :  $\pm 2.5^{\circ}\text{C}$  (-50°C ~ +350°C)  
 $\pm 4.5^{\circ}\text{F}$  (-58°F ~ +662°F)  
the remainder range :  $\pm 0.0075 | t |$
3. With rotation bakelite block for different angles, single ribbon or triple ribbon surface element by optional.
4. 2M coiled cable with miniature connector, Plug the HP-801 to compatible type K thermometer.
5. Sponge cleaner included.
6. Dimensions : 85mm (W) x 160mm (H) x 15mm (T).
7. N.W. : 125 g

### APPLICATIONS:

Special and unique design to precisely measured the temperature for all sizes of soldering iron tip.

Wide applications even more heating surface temperature.

## **MAXTHERMO-GITTA GROUP CORP.**

Tel : 886-2-2720-6601 (Rep.)

Fax : 886-2-2720-6603 . 886-2-2345-5120

E-mail : gitta@ms9.hinet.net

Add : 3C25, Taipei World Trade Center, No. 5,  
Sec. 5, Hsin Yi Rd. Taipei Taiwan, R.O.C.

AGENT