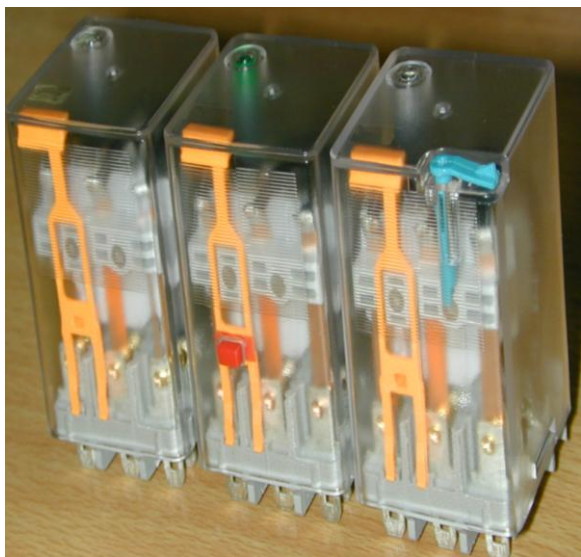


RELAYS & COMPONENTS BTA7



- Shows relay status in manual or powered condition.
- Shows coil “on” or “off” status ideal in low light conditions.
- Allows for manual operation of relay without the need for coil power. ideal for field service personnel to test control circuits
- When activated, holds push button and contacts in the operate position. excellent for analyzing circuit problems
- Allows operator to remove relays from sockets more easily than conventional relays
- Used for identification of relays in multi-relay circuits
- TUV R 50048279 0001

⇒ Contact rating

	BTA7-2C/3C
Contact capacity resistive load (Cos.Φ= 1)	10A, 240VAC
	10A, 28VDC
Contact capacity inductive load (cos.Φ=0.4, L/R=7ms)	5A, 240VAC
	5A, 24VDC

⇒ Coil rating

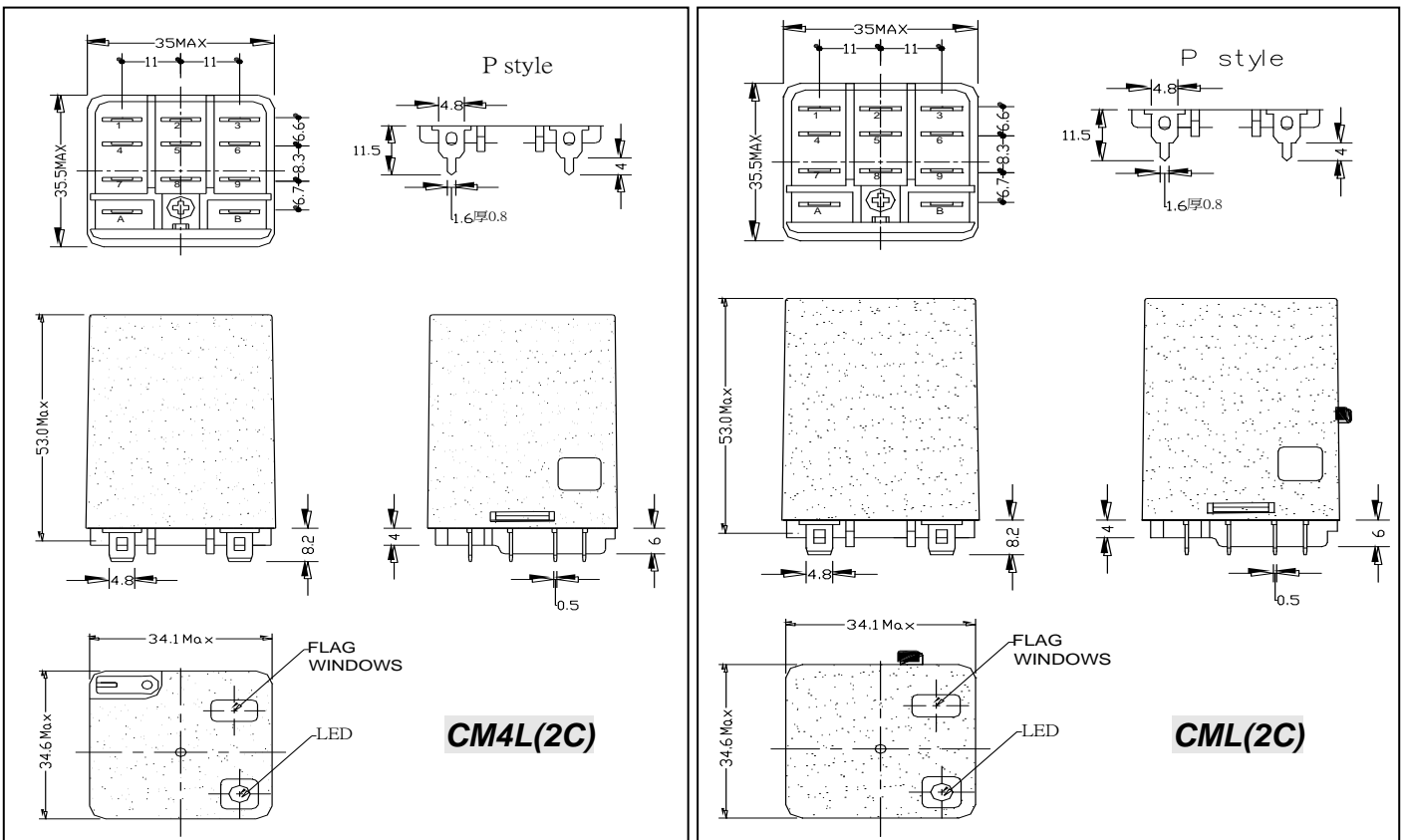
Rated voltage (V)		Coil resistance (Ω) ±10% at 25°C	Max. Pull-in voltage	Min. Dropout voltage	Max. Allowable voltage	Power consumption
			% of rated voltage at 25°C			
DC	2C 3C	6	80 Max.	10 Min.	110 Max.	Approx. 1.2~2.0W
		12				
		24				
		48				
		110				

AC	2C	6	4.2	85 Max.	30 Min.	110 Max.	Approx. 2.0~2.75VA
		12	18				
		24	72				
	3C	48	290				
		110/120	1700				
		220	7200				
		230	8000				
		240	9000				

Specifications

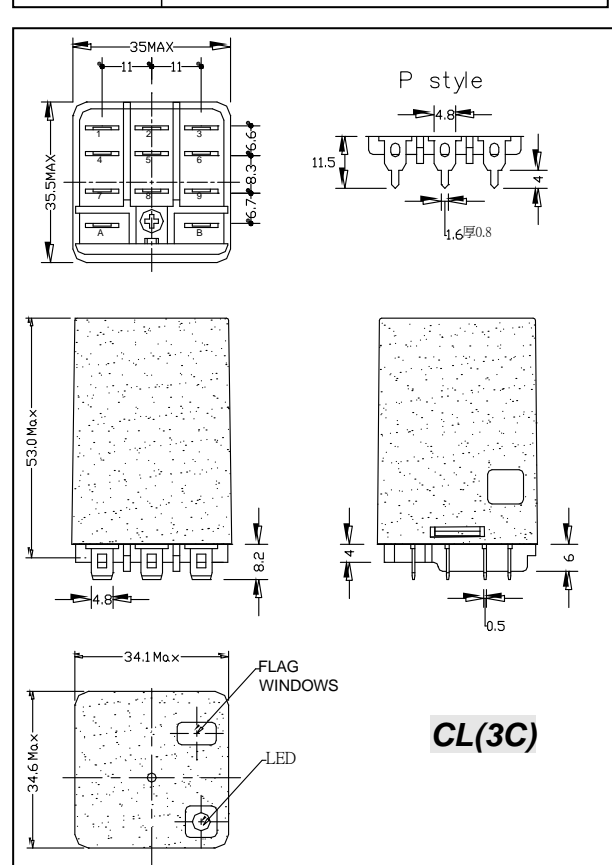
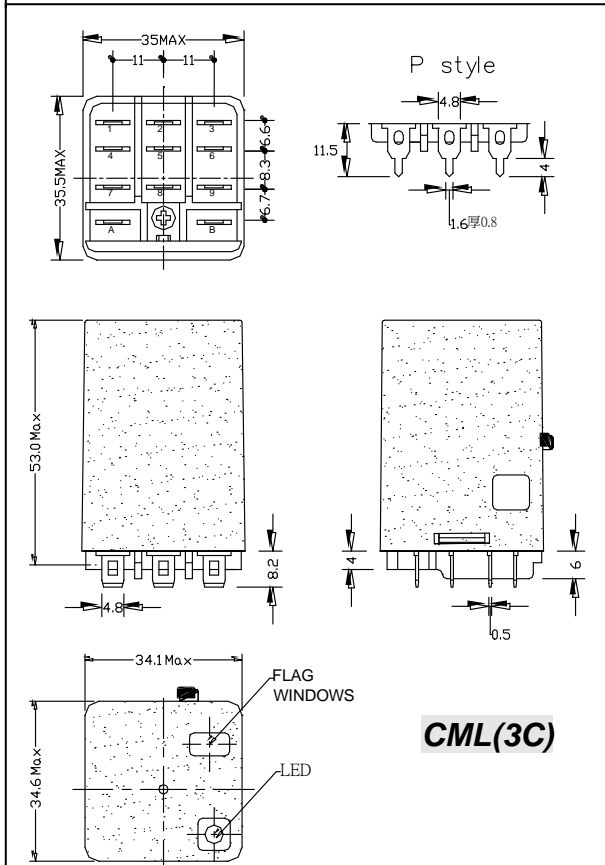
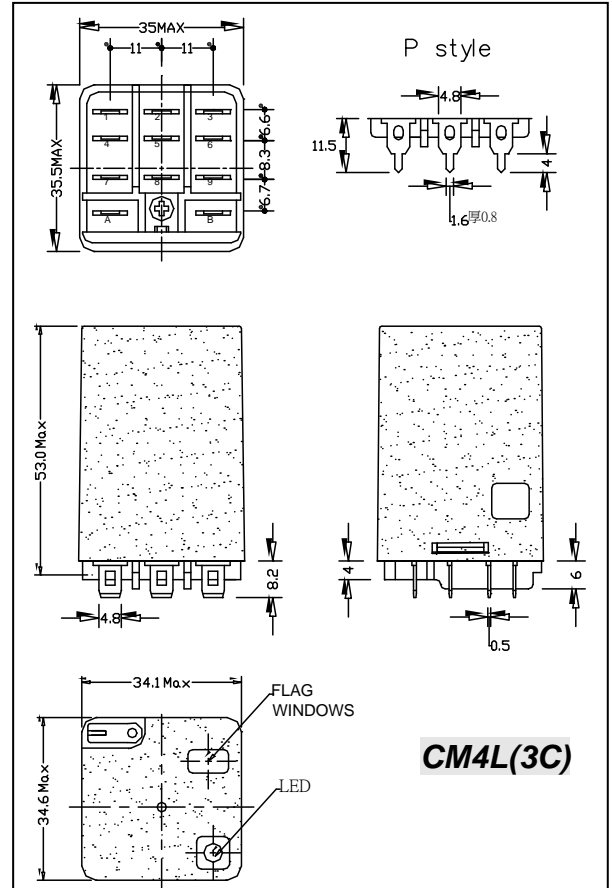
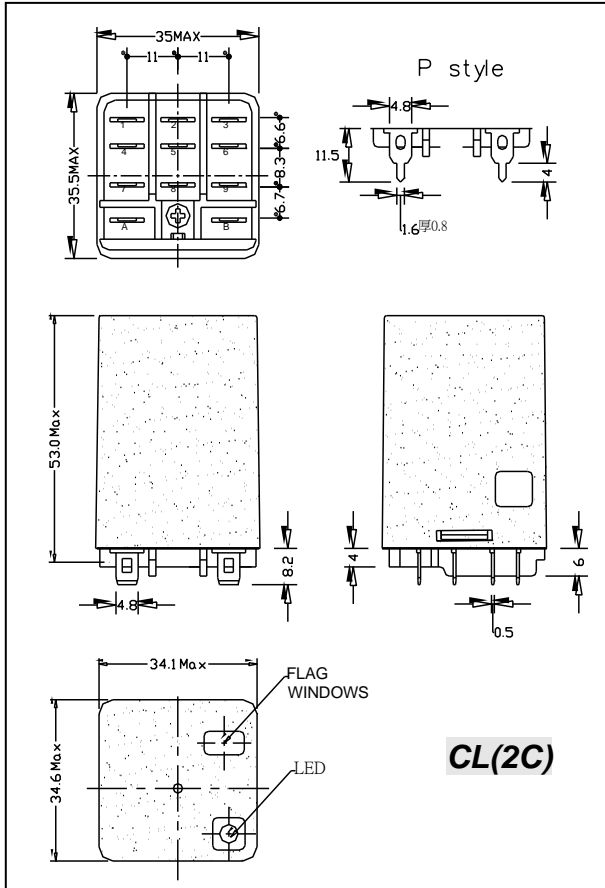
Contact resistance	50mΩ Maximum.
Operate time	20mS Maximum.
Release time	15mS Maximum.
Insulation resistance	500MΩ Minimum. At 500VDC.
Dielectric strength	Between open contact: 1500 VAC for 1 minute.
	Between contact and coil: 1500VAC for 1 minute.
	Between live parts and ground: 1500VAC for 1 minute.
Temperature (operating)	-30°C TO +50°C (AC); -30°C TO +55°C (DC).
Mechanical life	10,000,000 operations.
Electrical life	100,000 operations.
Contact material	AgSnO ₂ /AgNi10 gold flashed
Weight (approx.)	88g

Options

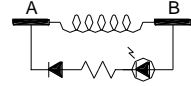
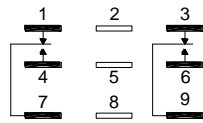


RELAYS & COMPONENTS BTA7

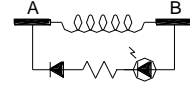
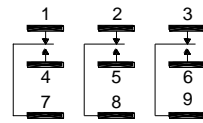
Options



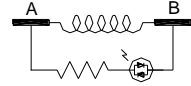
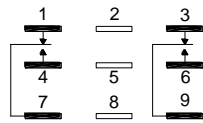
⇒ Wire diagrams (Bottom view)



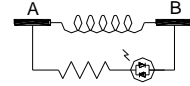
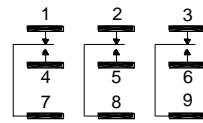
2C AC



3C AC



2C DC



3C DC

⇒ How to order

BTA7-3C - S-C M4L- 12 VAC

Coil voltage
Options

M: Manual push button, 4: lock down
L: single-polar LED (AC), bi-polar LED(DC)

W: without flag

Cover style

C: plain cover

Terminal style

S: S style P: P style

Contact material

Blank:AGSNO2 / AgNI10 gold flashed

Contact rating

blank: 10A

Contact arrangement

2C: DPDT 3C: 3PDT

SERIES