

微處理雙顯示電力錶

MICROPROCESS DUAL POWER METER



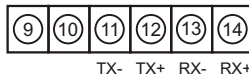
MP - 12MD 1 ϕ 2W Dual Power Meter

Specifications

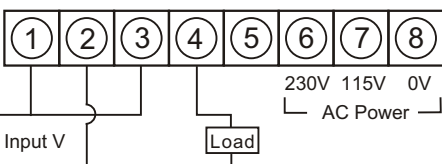
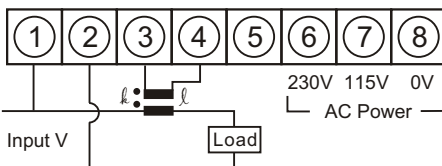
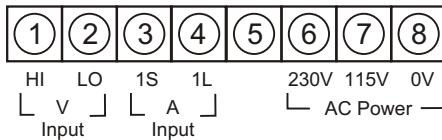
Display :	Red LED 0.4" high (Watt) Green LED 0.3" high (V,A,PF,Hz)
Max. Display :	4 Digits (Watt) 4 Digits (V,A,PF,Hz)
Over range Indication :	" o.L "
Conversion Rate :	1/sec.
Isolation :	Input/Output/Power
Memory :	EEPROM
Accuracy :	$\pm 0.25\%$ FS. ± 2 digit ($23 \pm 5^\circ\text{C}$)
Operating Temp. :	$0 \sim 60^\circ\text{C}$ / Below 80%R.H.
Storage Temp. :	$-10 \sim 70^\circ\text{C}$ / Below 70% R.H.
Power Supply :	AC 115/230V $\pm 10\%$, 50/60Hz Option : DC 12, 24, 48, 120V $\pm 20\%$
Power Consumption :	Approx. 4VA
Weight :	Approx. 550g
Dielectric Strength :	AC 2000V/1min (Input/Power)
Insulation Resistance :	More than 100M Ω at 500VDC
Dimensions :	96(W) x 48(H) x 144(D)mm
Panel Cut-Out :	91.5(W) x 44(H)mm

Connection Diagram

Upper



Lower



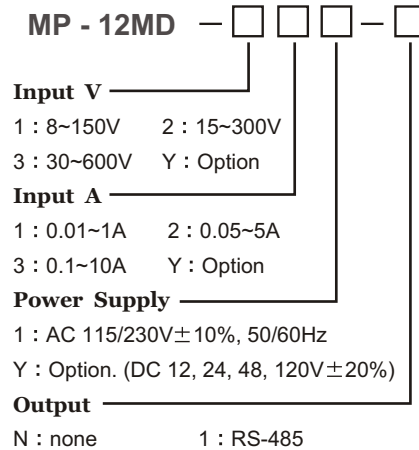
Features

- 4 unit V, A, KW, $\cos \theta$, Hz
- Can change V, A, $\cos \theta$, Hz by front sheet switch
- True RMS V/A
- Rate free setting
- Input / Output / Power is isolated
- RS-485 interface (Option)
- DIN case 96 x 48mm

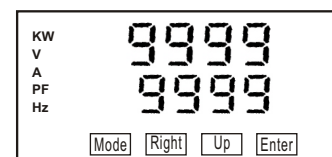
Input

Min.Input :	Voltage 5% of range Current 1% of range
Voltage :	AC 8~150V AC 15~300V AC 30~600V
Current :	AC 0.01~1A, AC 0.05~5A, AC 0.1~10A
Burden :	Voltage $\leq 0.1\text{VA}$ Current $\leq 0.2\text{VA}$
Watt :	Corresponding to V x A
Power Factor :	0.001 to 1.000
Frequency :	40~100Hz

Order Code



RS-485 Interface (option)



Address : 1 ~ FF
 Baudrate : 19200, 9600, 4800, 2400, 1200
 Frame : N.8.2, E.8.1, O.8.1, N.8.1
 Protocol : Modbus RTU Mode