

多功能電力錶

MICROPROCESS POWER METER



CWH system

KWH, KW, V, A (Max.5A)

CPH system

KWH, KW, V, A (Max.30A) 1 φ 2W, 1 φ 3W, 3 φ 3W

Features

- Max. display 8 digits (KWH)
Max. display 4 digits can change Voltage, Current or Watt
- PT x CT rate free setting
- CPH Current Max.30A
- RS-485 interface (Option)
- Pulse output (Option)
- Output : DO x 2 , DI x 2 (Option)
- Case 110 x 110mm

Specifications

| | |
|--------------------------------|---|
| Display : | 8 digits Red LED 0.4" high (KWH) 4 digits Green LED 0.4" high (V, A, KW) |
| Parameter setting : | Touch switches |
| Memory : | NV RAM |
| Accuracy : | ±0.25% FS. ±2 digits (V, A) ±0.5% FS. ±2 digits (KW, KWH) |
| Operating Temp. : | 0~50°C/ Below 80%R.H. |
| Storage Temp. : | -10~60°C/ Below 70% R.H. |
| Power Supply : | AC 90~260V, 50/60Hz |
| Option : | DC 24, 48, 120V ±20% |
| Power Consumption : | Approx. 5VA |
| Weight : | Approx.550g |
| Dielectric Strength : | AC 2000V/1min (Input/Power) |
| Insulation Resistance : | More than 100MΩ at 500VDC |
| Dimensions : | 110(W) × 110(H) × 140(D)mm |

Input

| Circuit | AC Input | | | Max. Reading (KWH) |
|---------|----------|---------|-------|--------------------|
| 1 φ 2 W | Voltage | Current | Freq. | 99999.999 |
| 1 φ 3 W | | | | 120V |
| 3 φ 3 W | 240V | 30A | 60Hz | 9999999.9 |
| 3 φ 4 W | 480V | 5A | | 99999999 |

Burden : Voltage ≤ 0.1VA
Current ≤ 0.2VA

Max. over : Voltage →AC 650V continuous
Current →3 ×rated continuous

Frequency : 45~65Hz

Output

Pulse output (option)

Output : Open collector (Standard) or Reed Relay
1 Count / 1Pulse

RS-485 Interface (option)

Address : 1 ~ FF
Baudrate : 19200,9600,4800,2400
Frame : N.8.2, E.8.1, O.8.1, N.8.1
Protocol : Modbus RTU Mode

DO output (option)

Output : 2 x Relay
Relay Contact Capacity : AC 250V, 1A resistive load
DC 30V, 2A resistive load

DI input (option)

Digital input : 2 x point

Order Code

CWH, CPH —

Connection

- 12 : 1 phase 2 wire
- 13 : 1 phase 3 wire
- 33 : 3 phase 3 wire
- 34 : 3 phase 4 wire

Input

- 1 : AC 120V, 5A A : AC 120V, 30A
- 2 : AC 240V, 5A B : AC 240V, 30A
- 3 : AC 480V, 5A C : AC 480V, 30A
- 4 : AC 380/220V, 5A

Y : Option

Input Freq.

- 1 : 50Hz
- 2 : 60Hz
- Y : Option

Power Supply

- 1 : AC 90~260V, 50/60Hz
- 2 : DC 24V
- 3 : DC 120V

Interface

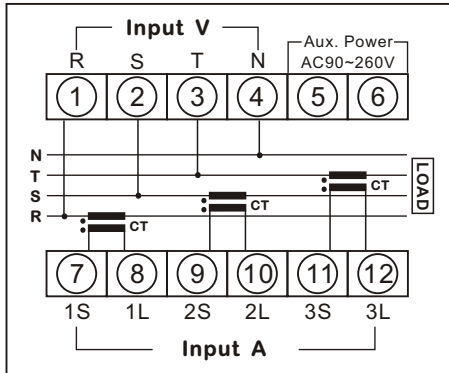
- 1 : RS-485
- 2 : RS-232
- 3 : Pulse (1Pulse/KWH)
- N : None

Output

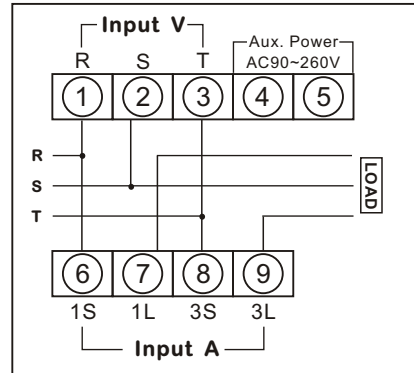
- 1 : DO x 2 + DI x 2
- N : None

Connection Diagram

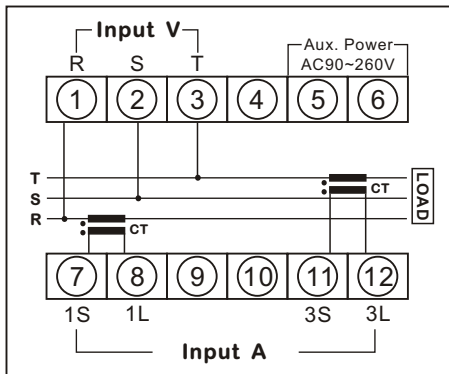
3 ϕ 4W (CWH-34)



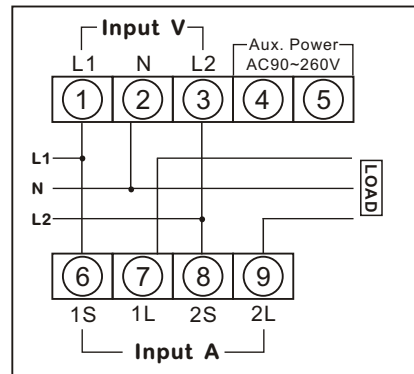
3 ϕ 3W (CPH-33)



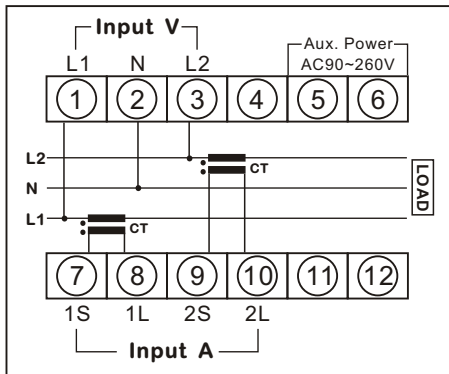
3 ϕ 3W (CWH-33)



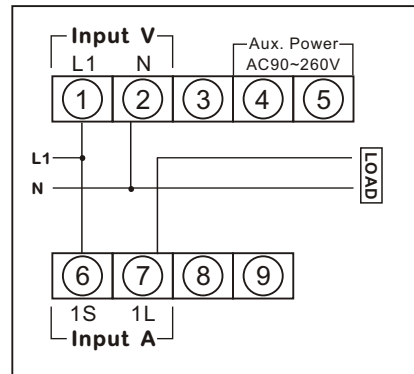
1 ϕ 3W (CPH-13)



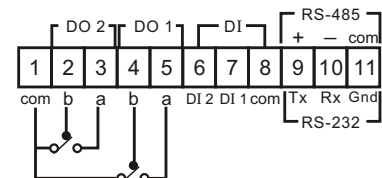
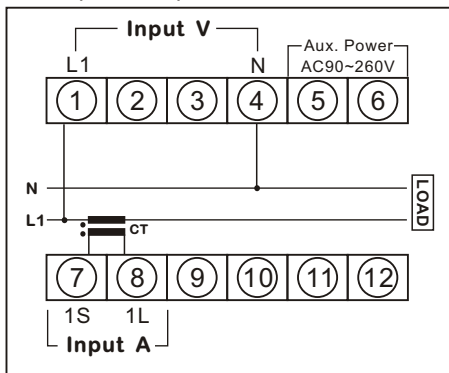
1 ϕ 3W (CWH-13)



1 ϕ 2W (CPH-12)



1 ϕ 2W (CWH-12)



Dimensions (mm)

