

MA-102H
(Hanging Type)

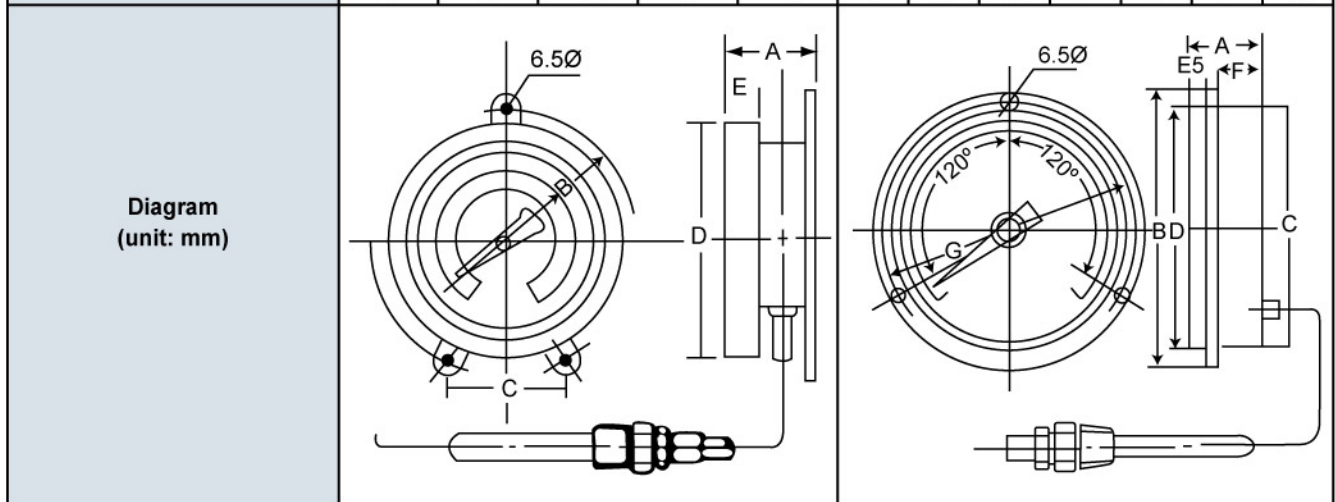


MA-102M
(Mounting Type)



Capillary Thermometer

Model No.	MA-102H					MA-102M						
Temperature Range	± 50°C/°F to 0-650°C/°F											
Accuracy	Within ± 1% of full scale											
Material of Case	Stainless Steel, SUS 304											
Length of Spiral	Standard 3M, longest 10M											
Length of Sensor	Standard 12mm Dia.X150mm or be ordered											
Size (unit: mm)	D	A	B	C	E	D	A	B	C	E	F	G
	4"	50	122	120°	15	4"	53	136	103	17	25	124
	6"	60	185	50°	18	6"	60	204	155	15	34	185



Remark

1. With a 1/2"PT Screw Nut for 4" Diameter
2. With a 3/4"PT Screw Nut for 6" Diameter
3. Electric Contactor 0.3A / 110V or 0.15A / 250V can be produced by ordered
4. Mercury Filled

Ordering Information

MA-102H — **A1** — **6** — **500** — **12Ø x 6" L** — **3M** — **1/2"PT**
A **B** **C** **D** **E** **F** **G**

A. Model No :
 MA-102H (Hanging type)
 MA-102M (Mounting type)

B. Electric Contactor (0.15A / 250V or 0.3A / 110V) :
 0-Non
 A1-With 1 contactor for high alarm
 A2-With 1 contactor for low alarm
 B1-With 2 contactor for high-high alarm
 B2-With 2 contactor for high-low alarm
 B3-With 2 contactor for low-low alarm

C. Dial Diameter :
 3=3" dial 5=5" dial
 4=4" dial 6=6" dial

D. Temperature Range :
 Minimum -50°C / °F
 Maximum 650°C / °F

E. Sensor Tube Diameter and Length :
 Standard is 12Ø x 6" L, other are available

F. Capillary Length :
 Standard is 3M, other are available

G. Thread Connection :
 Standard: 3" & 4" dial is 1/2"PT
 5" & 6" dial is 3/4"PT

MA102H / MA102M