

Maxtech Designer ***Maxtech SCADA***



www.maxthermo.com



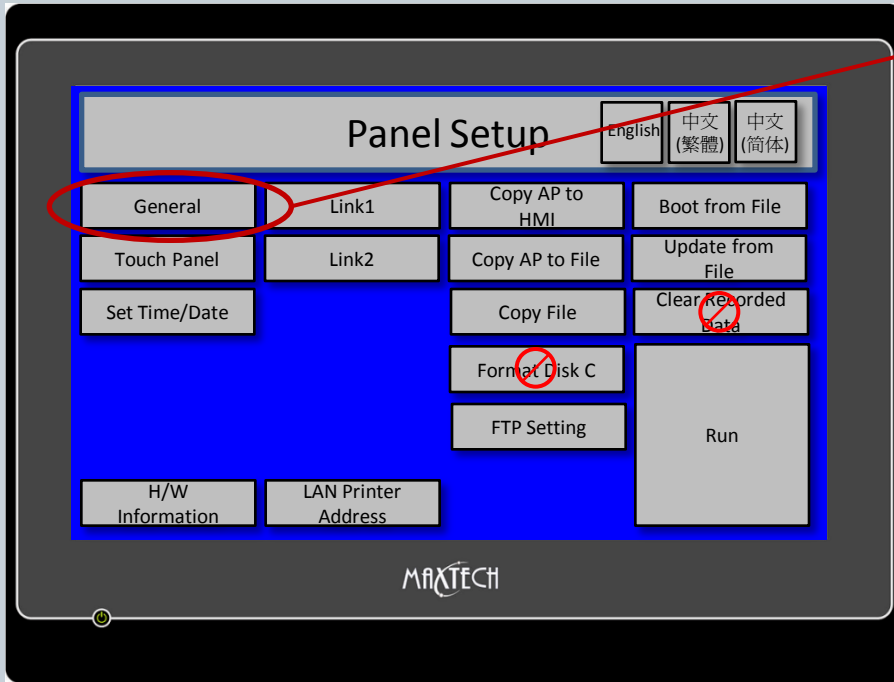
Operation Example

Maxtech Designer Maxtech SCADA



www.maxthermo.com

MT HMI - Panel Setup / Run AP



Remark :
MT043 / MT056 / MT070 / MT080 /
MT100 / MT104 Type use

General

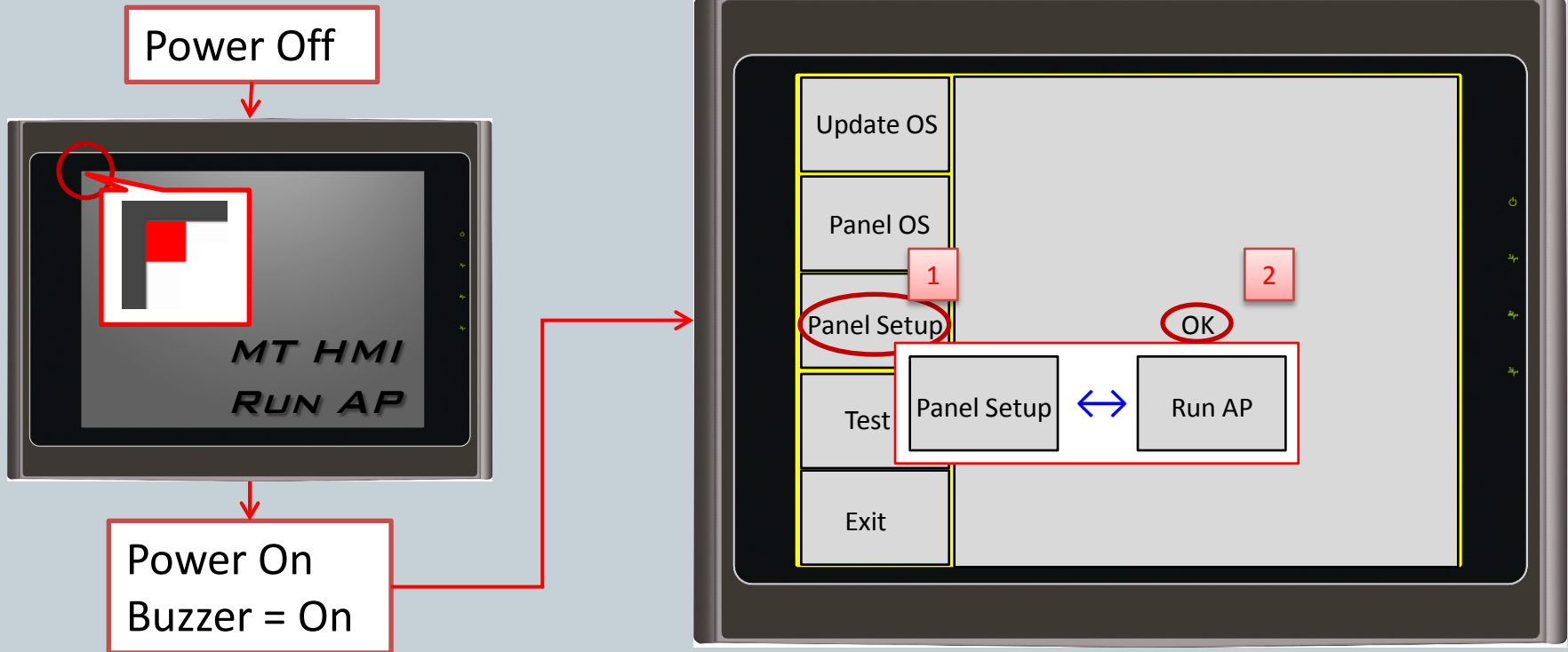
Check Battery:	True	↑	+
Screen Saver Time (minutes):	20	↓	-
Allow To Run Panel Setup:	True		
Communications Setting:	Default		
Start-up Language:	Default		
Run AP After Power On:	True		
Display Upside	True : Run AP False : Panel Setup		
IP Address:	192	1	
Subnet Mask:	255	255	255 0
LCD Brightness			OK
Increase	Decrease	Save	Cancel

Maxtech Designer Maxtech SCADA



www.maxthermo.com

MT HMI - Panel Setup / Run AP



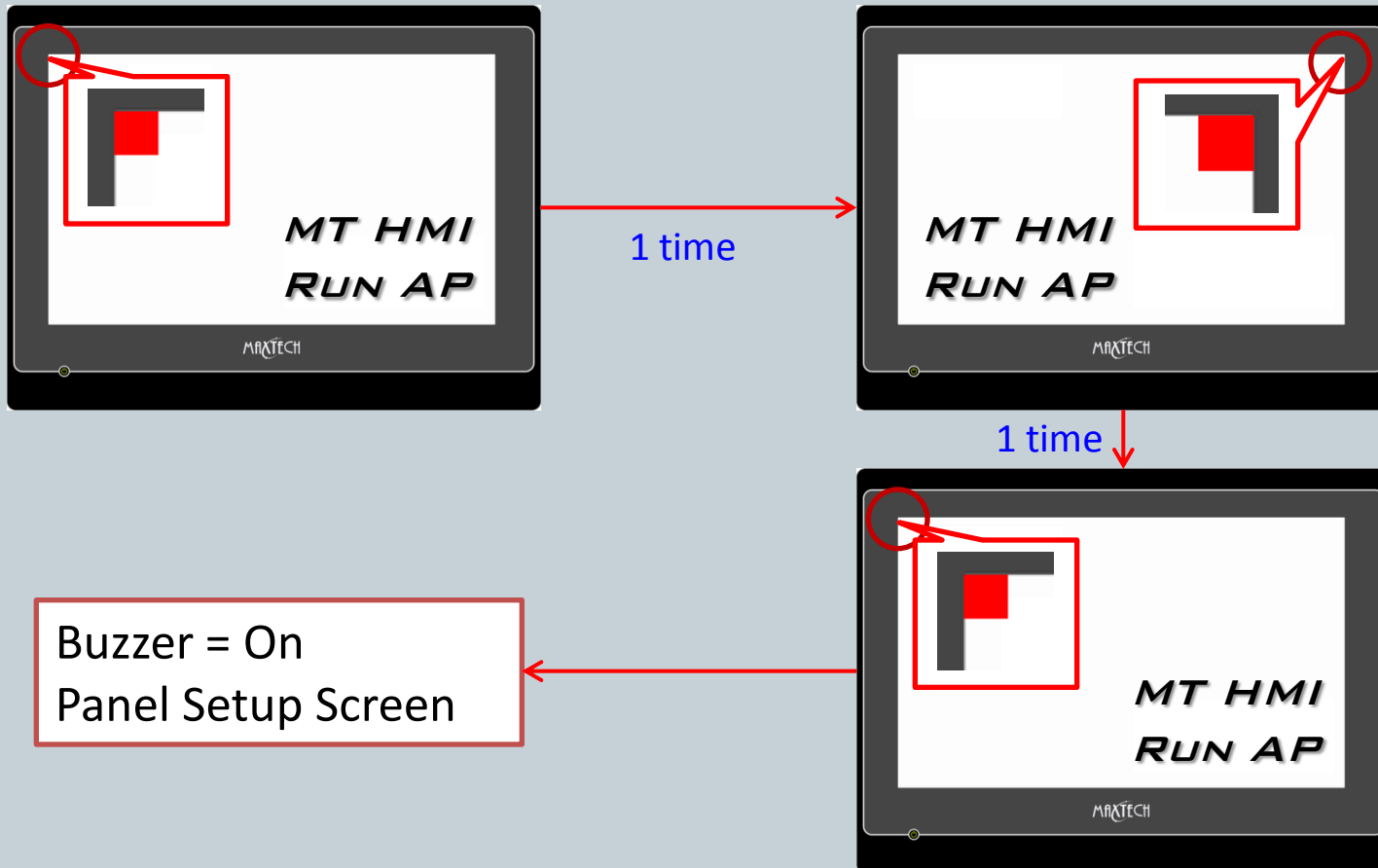
Remark : MT035 / MT037 / MT057 / MT058/ MT070-WAT / MT080-TNT / MT0104-TNT/
MT121 Type use (No DIP Switch Model)

Maxtech Designer Maxtech SCADA



www.maxthermo.com

MT HMI - Run AP to Panel Setup

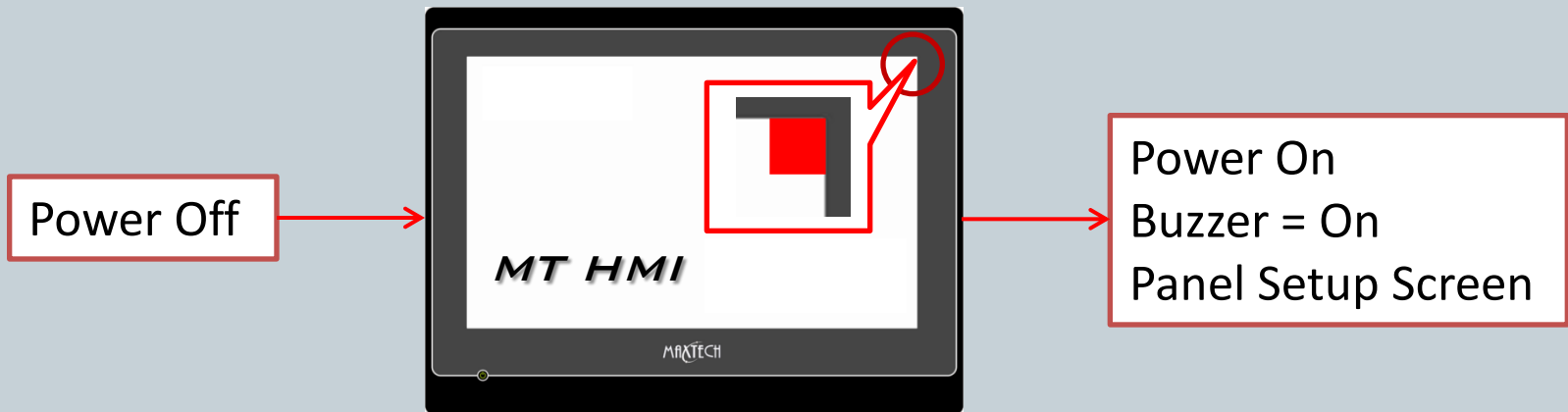


Maxtech Designer Maxtech SCADA



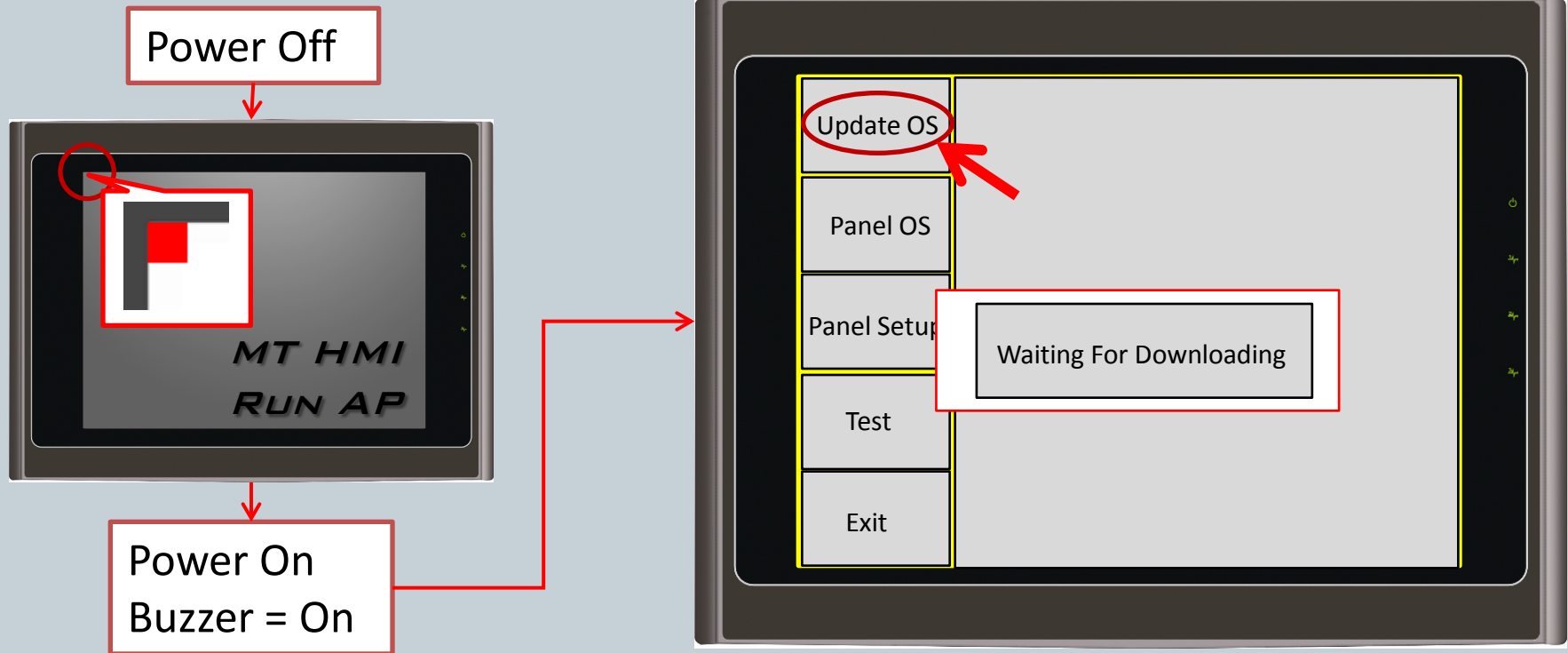
www.maxthermo.com

MT HMI - Run AP to Panel Setup



Maxtech Designer Maxtech SCADA

MT HMI – Update OS (Step1)



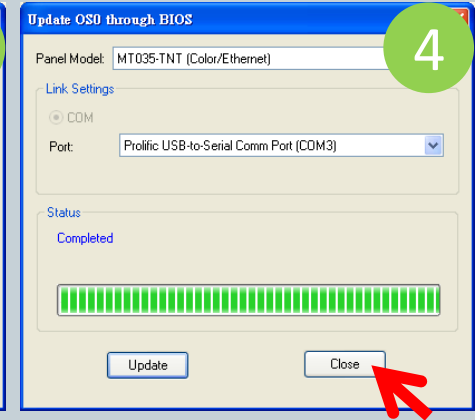
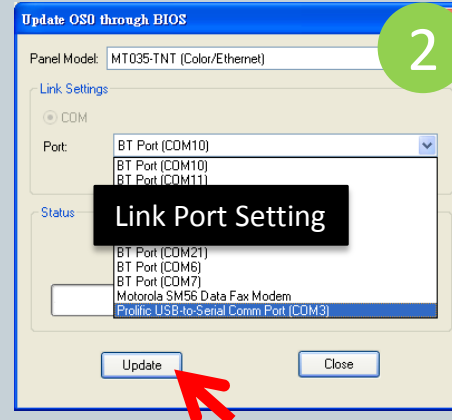
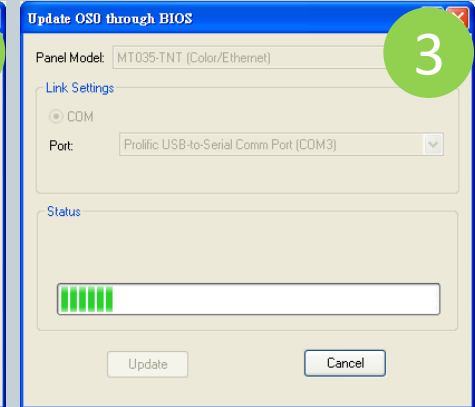
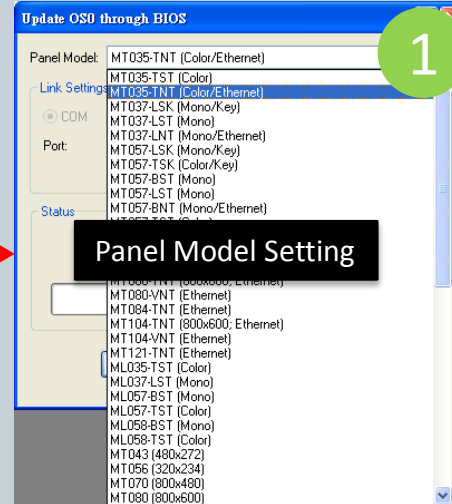
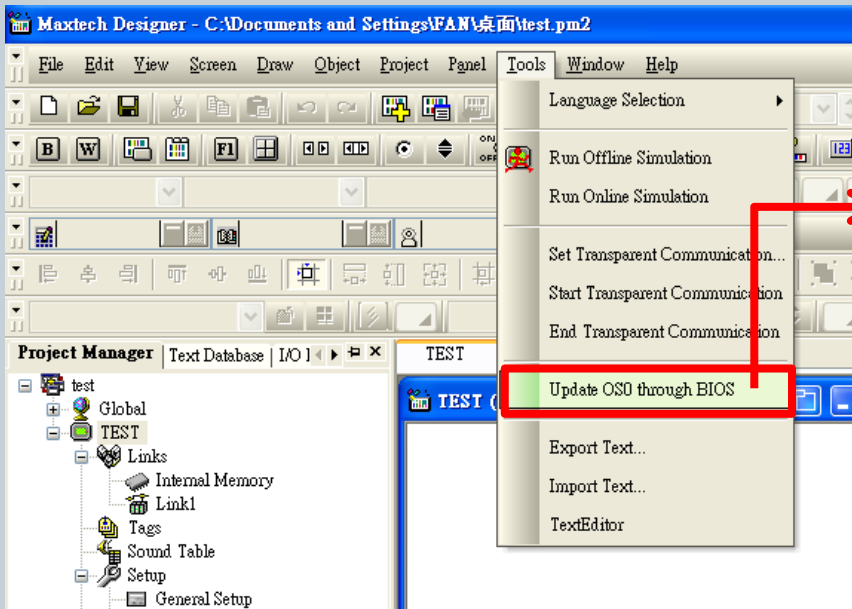
Remark : MT035 / MT037 / MT057 / MT058/ MT070-WAT / MT080-TNT / MT0104-TNT/
MT121 Type use (No DIP Switch Model)

Maxtech Designer Maxtech SCADA



www.maxthermo.com

MT HMI – Update OS (Step2)

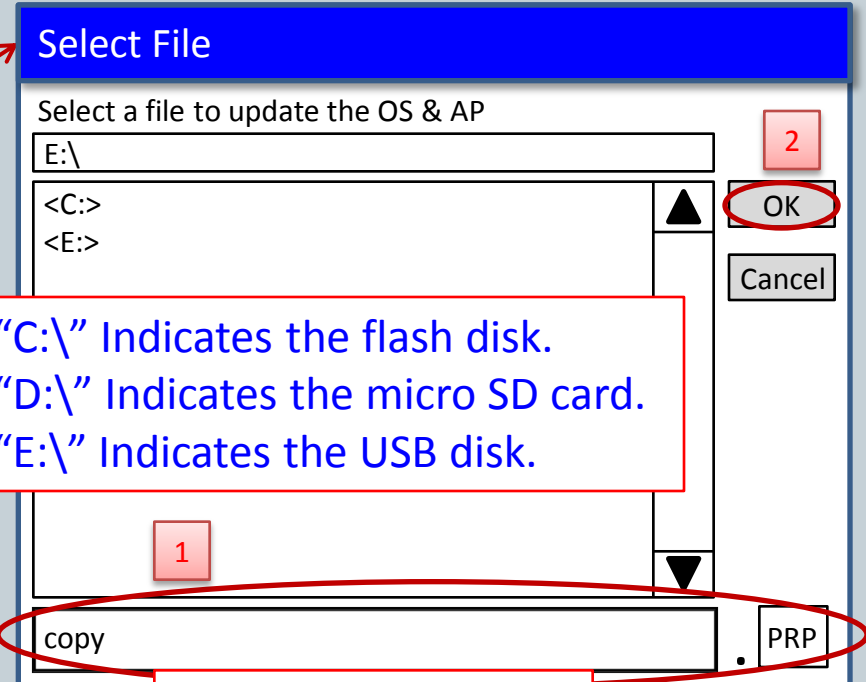
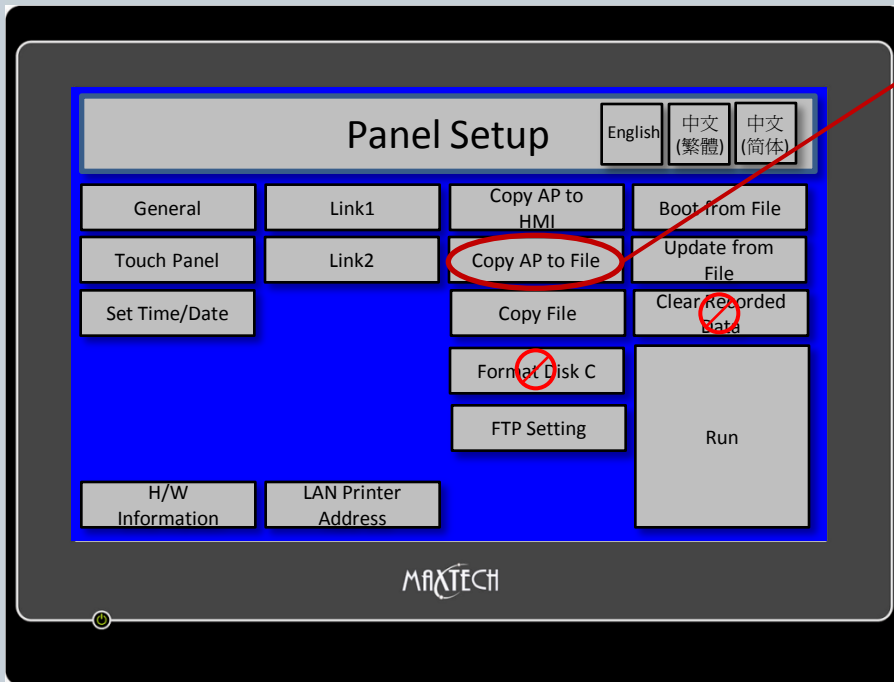


Maxtech Designer Maxtech SCADA



www.maxthermo.com

MT HMI – HMI (.PRP) File to USB Disk



“C:\” Indicates the flash disk.
“D:\” Indicates the micro SD card.
“E:\” Indicates the USB disk.

“Upload AP & OS”

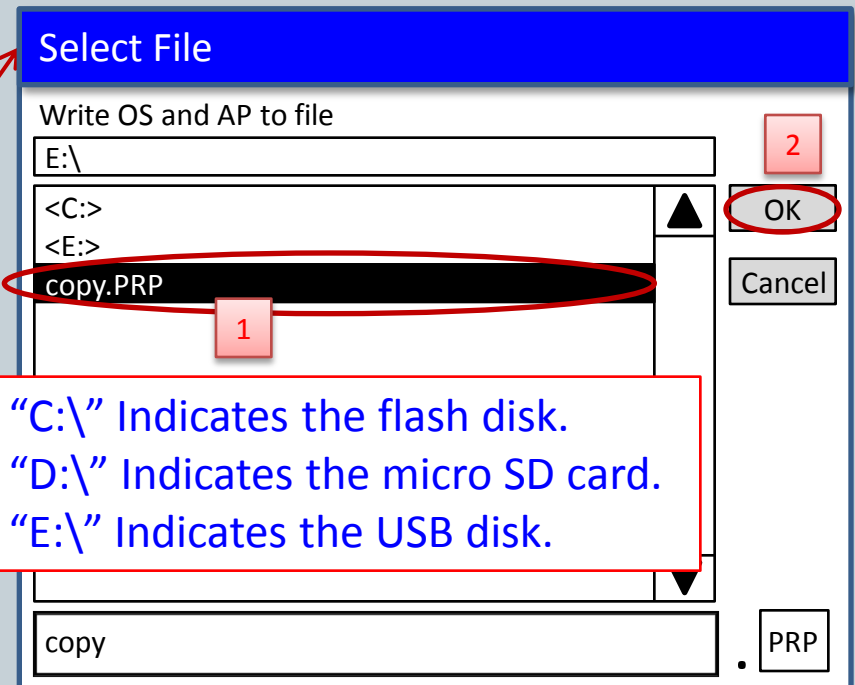
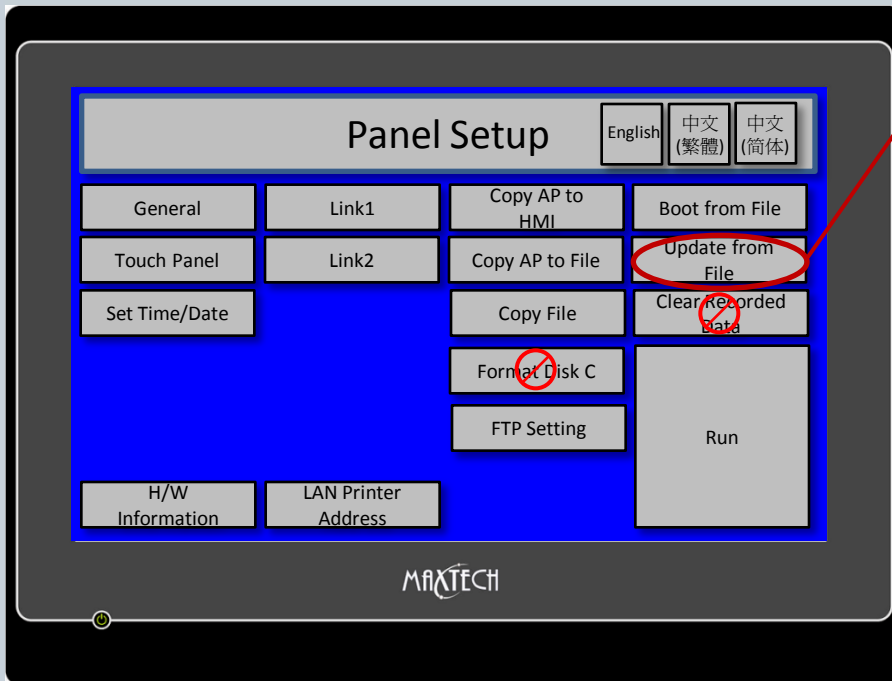
File Name: copy.PRP

Maxtech Designer Maxtech SCADA



www.maxthermo.com

MT HMI – USB Disk (.PRP) File to HMI



“C:\” Indicates the flash disk.
“D:\” Indicates the micro SD card.
“E:\” Indicates the USB disk.

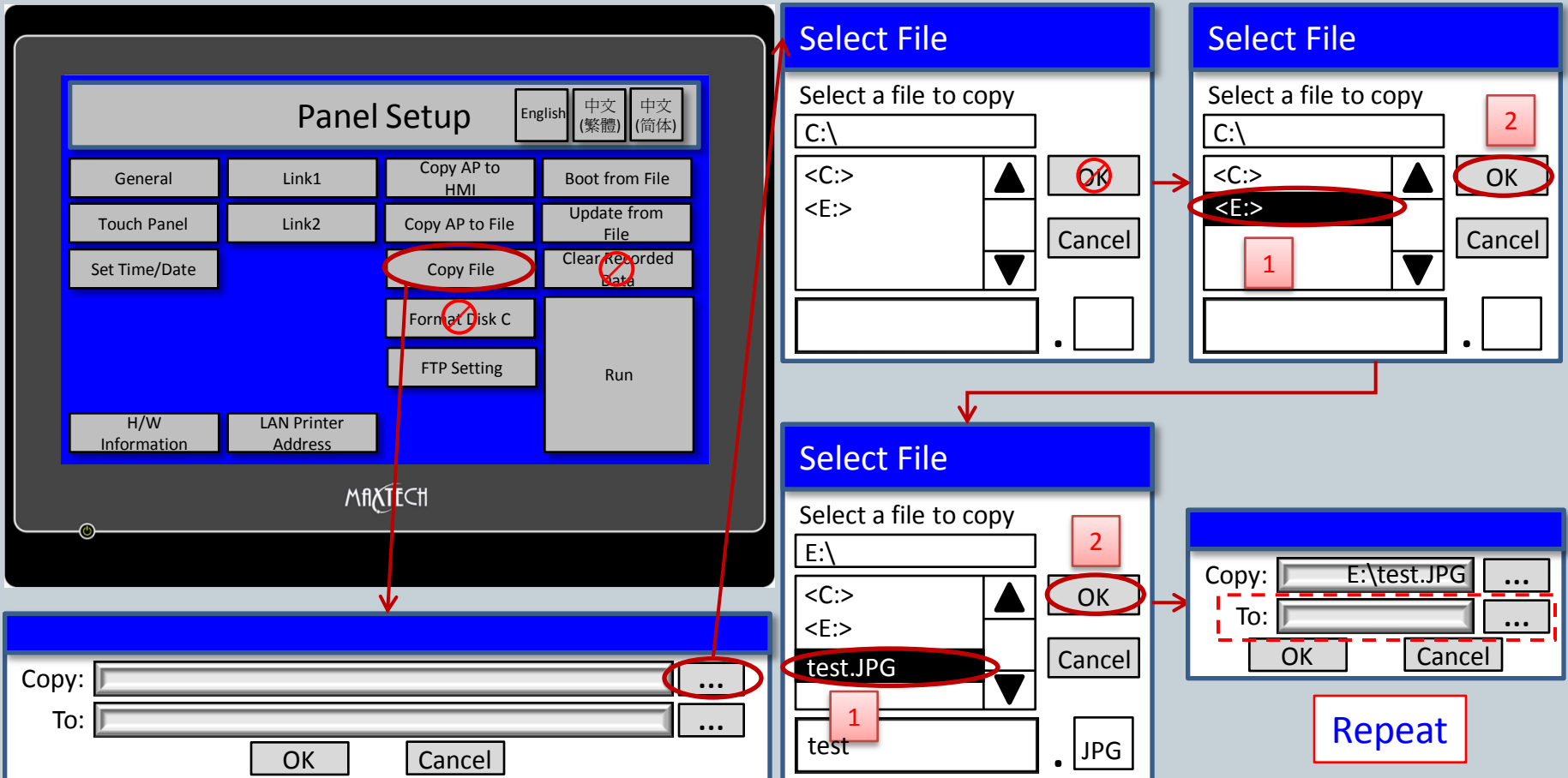
“Download AP & OS”

Maxtech Designer Maxtech SCADA



www.maxthermo.com

MT HMI – Copy File (HMI to USB) or (USB to HMI)

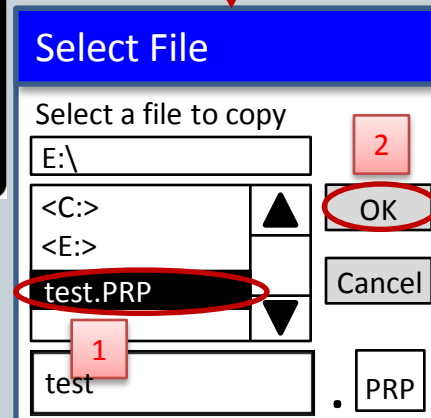
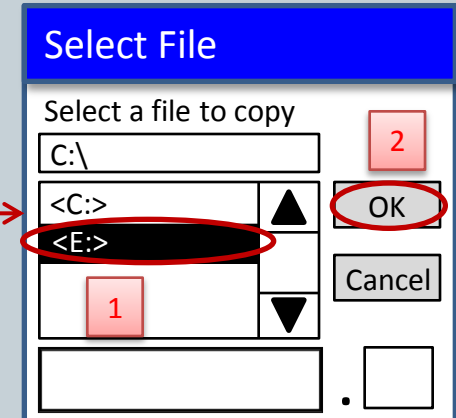
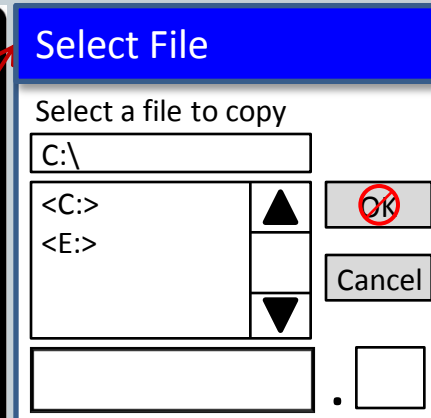
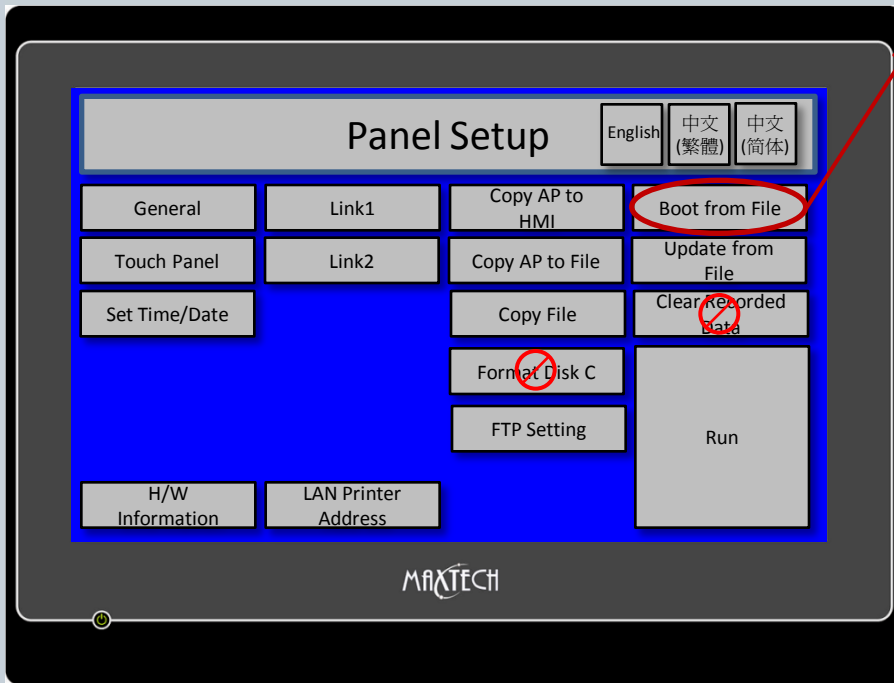


Maxtech Designer Maxtech SCADA



www.maxthermo.com

MT HMI – Use the USB Disk File → Run AP

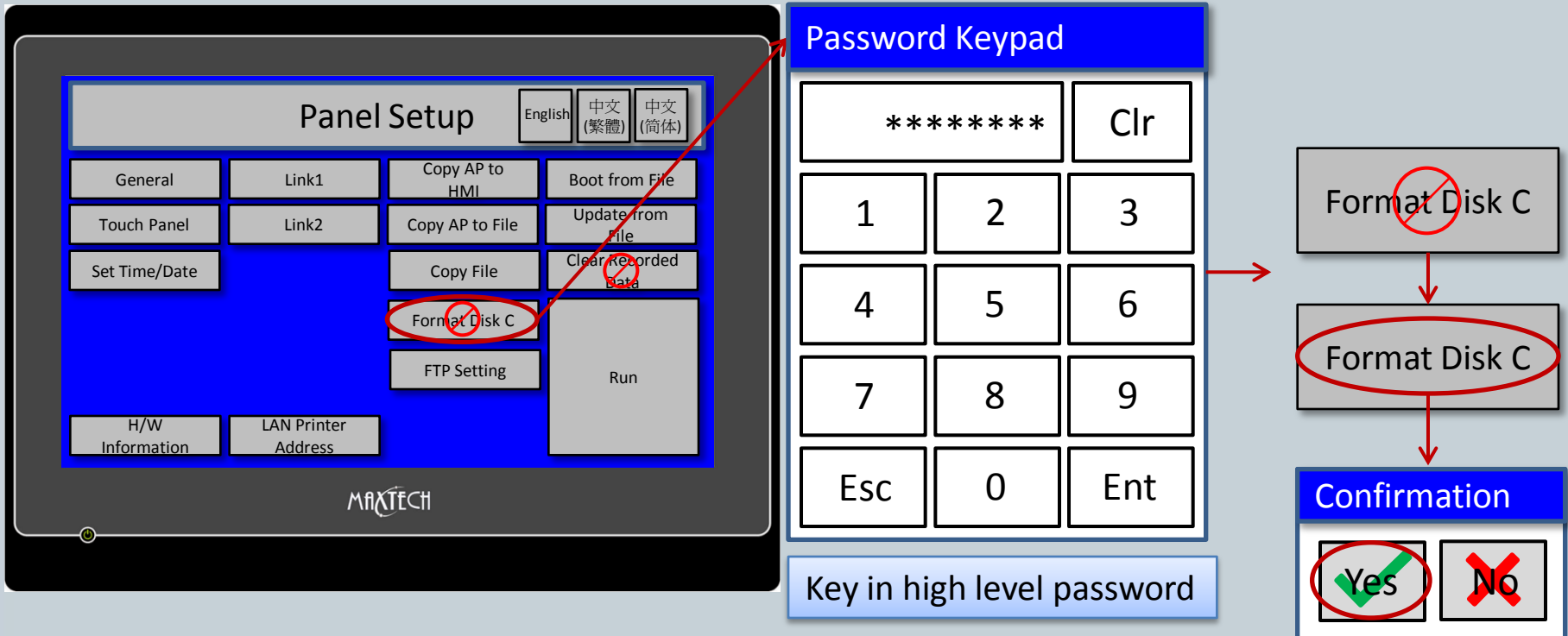


Maxtech Designer Maxtech SCADA



www.maxthermo.com

MT HMI – Format Disk C (Flash Disk)

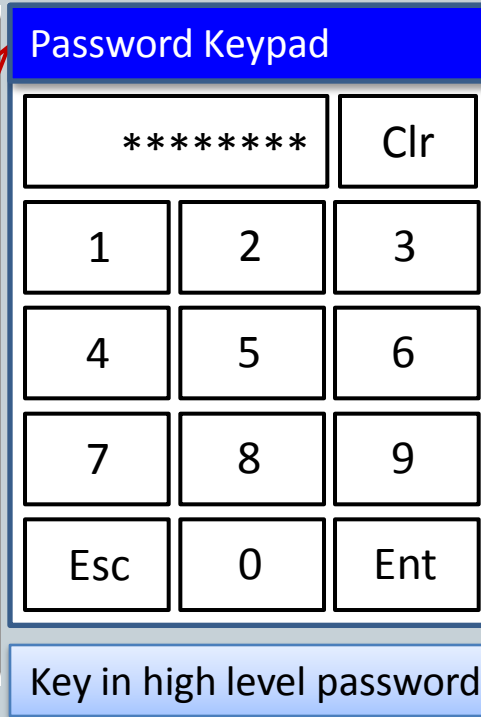
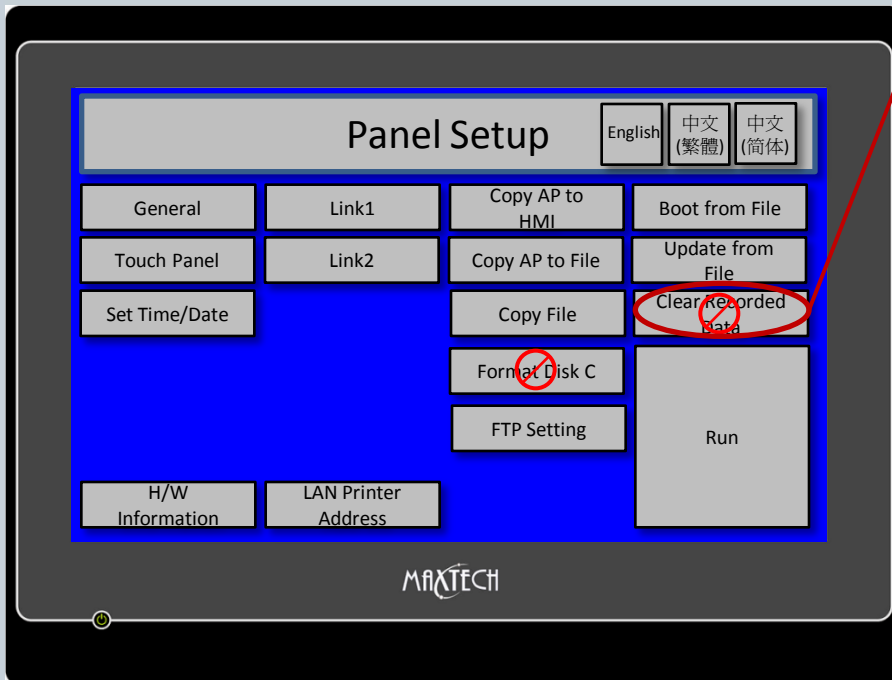


Maxtech Designer Maxtech SCADA



www.maxthermo.com

MT HMI – Clear Recorded Data



Clear Recorded Data

Clear Recorded Data

Confirmation

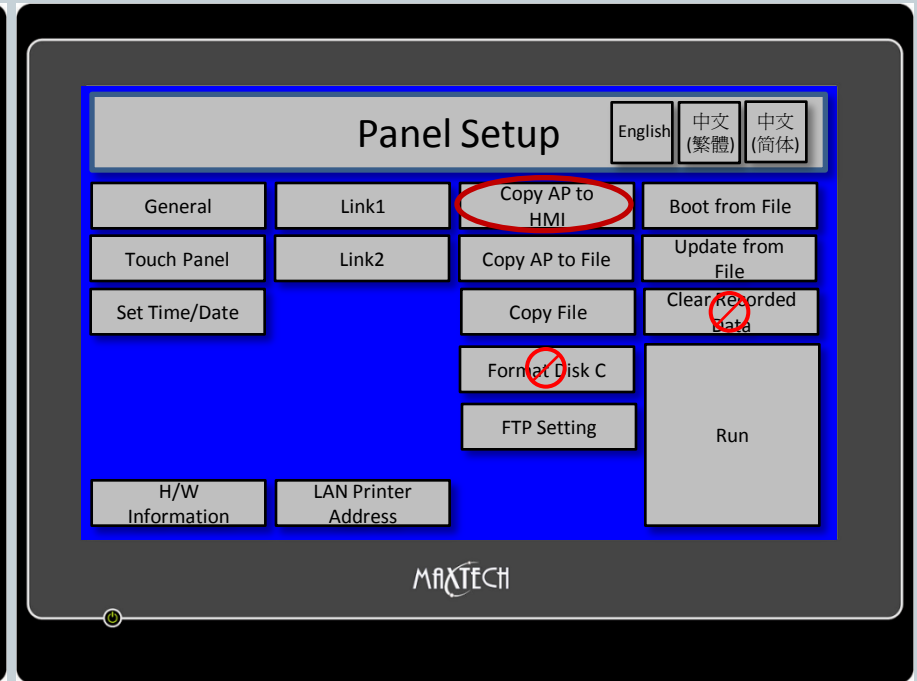
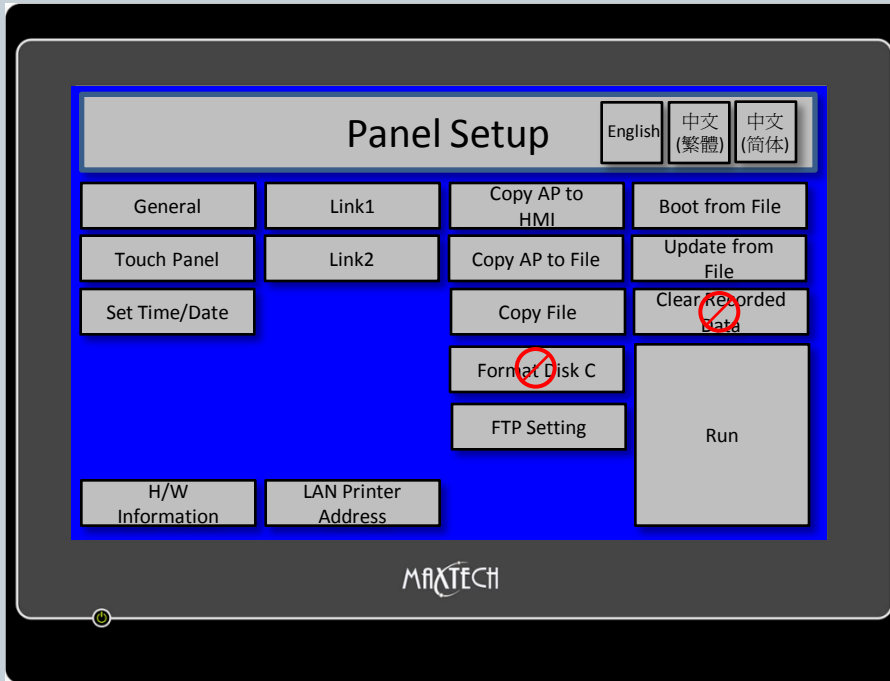
Yes	No
-----	----

Maxtech Designer Maxtech SCADA



www.maxthermo.com

MT HMI – Copy AP to HMI



The same HMI Model, use the serial port connection only.

Maxtech Designer Maxtech SCADA



www.maxthermo.com

MT HMI – Installing USB Cable Driver to PC

1 Welcome to the Found New Hardware Wizard

Windows will search for current and updated software by looking on your computer, on the hardware installation CD, or on the Windows Update Web site (with your permission).
[Read our privacy policy](#)

Can Windows connect to software?

Yes, this time only

Yes, now and every time I connect a device

No, not this time

Click Next to continue.

2

This wizard helps you install software for:

Neo HMI

If your hardware came with an installation CD or floppy disk, insert it now.

What do you want the wizard to do?

Install the software automatically (Recommended)

Install from a list or specific location (Advanced)

Click Next to continue.

3

Your search and installation options.

Search for the best driver in these locations.

Use the check boxes below to limit or expand search paths and removable media. The best driver found will be installed.

Search removable media (floppy, CD, DVD)

Include this location in the search:

D:\Program Files\Maxtech Designer\Usb

Don't search. I will choose the driver to install.

4

Please wait while the wizard installs the software...

Neo HMI

Hardware Installation

The software you are installing for this hardware:

Neo HMI

has not passed Windows Logo testing to verify its compatibility with Windows XP. (Tell me why this testing is important.)

Continuing your installation of this software may impair or destabilize the correct operation of your system either immediately or in the future. Microsoft strongly recommends that you stop this installation now and contact the hardware vendor for software that has passed Windows Logo testing.

C:\Program Files\Maxtech Designer\V1.2\Usb